


CONSTRUCTION / CLASSIFICATION

Type of vessel	Multipurpose vessel
Class	Bureau Veritas
Trading area	Unrestricted navigation
Flag	Cyprus

PRINCIPAL DIMENSIONS

Length overall	32.0 m
Width	11.1 m
Height	3.7 m
Min. operational draught	±2.4 m
Gross tonnage	314 GT
Net tonnage	94 NT

ACCOMMODATION

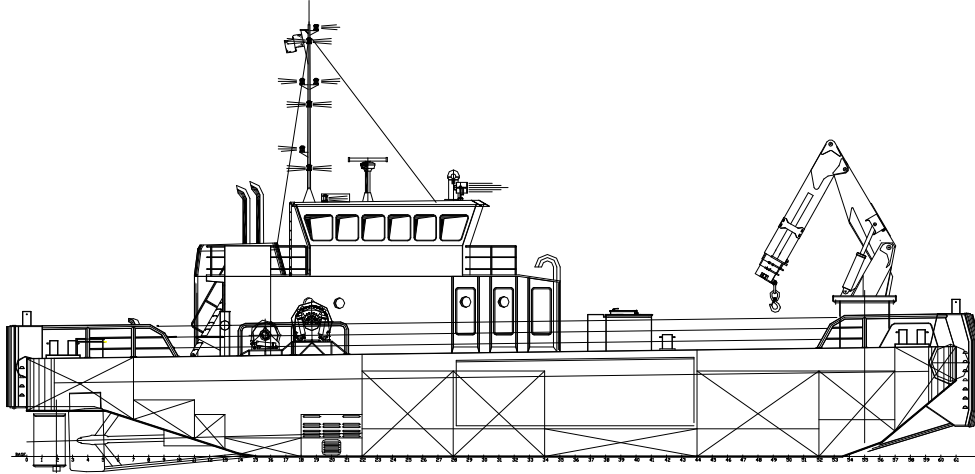
2 Cabins for 1 person, 3 cabins for 2 persons, mess room, galley, sanitary, central heated, air conditioning

MAIN DATA

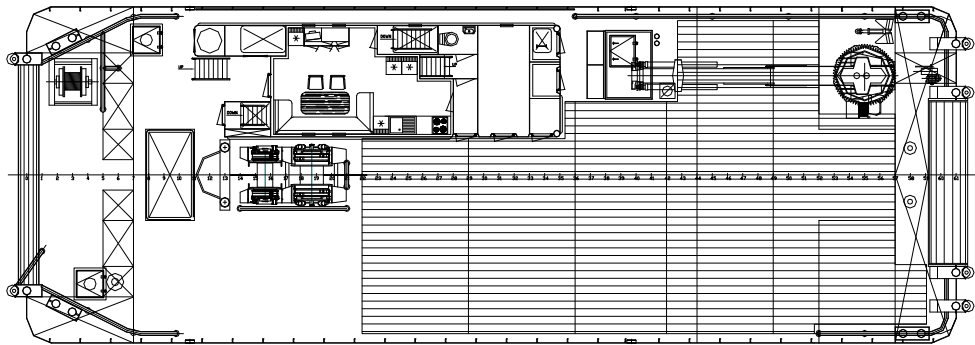
Propulsion	Twin screw, 5-blade fixed pitch props ø1,650 mm
Output main engines	1,760 kW
Bow thruster	358 kW - 360 degrees
Bollard pull approx.	31 t
Free running speed	12 kn
Power supply	2 x 180 kVA (parallel configuration)
Towing/anchor	1 x 80 t pull, 110 t hold
Handling winch	1 x 50 t pull, 65 t hold
Towing pins	WKH 1500
Auxiliary winch	1 x 10 t pull
Hydraulic crane	Heila 200-3SL

BUNKER CAPACITIES

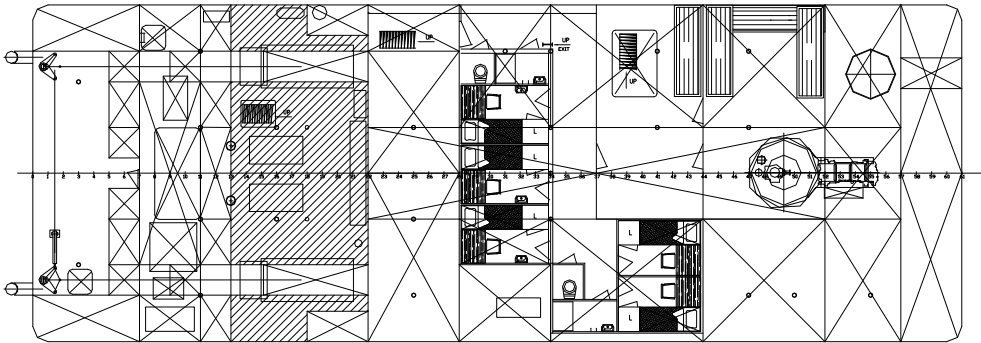
Fuel	149 m ³ (transfer capacity approx. 90%)
Water	43 m ³ (transfer capacity approx. 90%)
Sewage	17.5 m ³
Transfer pump	
Fuel	50 m ³ /hr at 3 bar
Water	50 m ³ /hr at 3 bar



SIDE VIEW



TOP VIEW DECK LEVEL



TOP VIEW BELOW DECK