

EQUIPMENT SHEET

BOKA OCEAN

CABLE LAY VESSEL / CONSTRUCTION SUPPORT VESSEL



CONSTRUCTION / CLASSIFICATION

Built by	Metalships & Docks, Vigo, Spain
Year of construction	2009
Classification	DNV +1A1, DYNPOS-AUTR, EO, DK(+), CLEAN, CLEAN DESIGN, COMF-V(3), NAUT-OSV, HELDK, SPS
Flag	Bahamas
Port of registry	Nassau

FEATURES

Accommodation	118 berths, 24 x single cabins and 47 x double cabins
Client & office facilities	1 x offline office on 01 ACC 1 x online office on 04 ACC 1 x conference room 1 x briefing room/cinema
Hospital	2 berths
Mess room	60 seats
Recreation room	50 seats
Conference room	12 seats
Reception room	Reception room for helideck
Recreation facilities	Gymnasium, sauna and cinema

CAPACITIES

Bunker capacity	Approx. 2,100 m ³
Other tanks for cargo	Potable water: approx. 1,400 m ³ Ballast water: approx. 7,400 m ³
Freshwater gen.	2 of each 25 m ³ per day

MAIN DATA

Length overall	136.6 m
Length BP	120.4 m
Beam	27.0 m (27.6 m at stern crane)
Draft max	6.85 m
Depth main deck	9.7 m
Deadweight	Approx. 10,000 t
Main deck area	Approx. 2,400 m ²
Deck strength over all	10 t/m ²
Deck hatches	Two 4 m x 3 m hatches

PROPULSION AND MAIN SYSTEM

Propulsion	2 x Azimuth thrusters each 3,500 kW
Bow thruster	1 x RR swing up thruster 1,500 kW 2 x RR tunnel thrusters 1,500 kW each

ELECTRIC POWER GENERATION

Main generator	4 x 3,230 kW + 2 x 1,500 kW
Harbour generator	Caterpillar, 580 kW

DYNAMIC POSITIONING SYSTEM

DP System	DP2 - Kongsberg SPD 21 KPOS
Class	DnV DYNPOS-AUTR, complies NMD class 2
Reference system	2 x Kongsberg HiPAP 500 2 x DGPS DPS-i series LTW Taut Wire Mk1.5 Fan Beam
ERN	(99, 99, 98)

MCLS - MODULAR CABLE LAY SYSTEM

Turntable capacity	> 3,500 tons
Main deck tensioner	15 ton tracked IHC
Loadarm tensioner	3 ton tracked TMS
Quadrant handling	25 tons
CPS handling	3 manipulator arms
CPS storage	Equal to 20x 20' ISO container

DECK EQUIPMENT

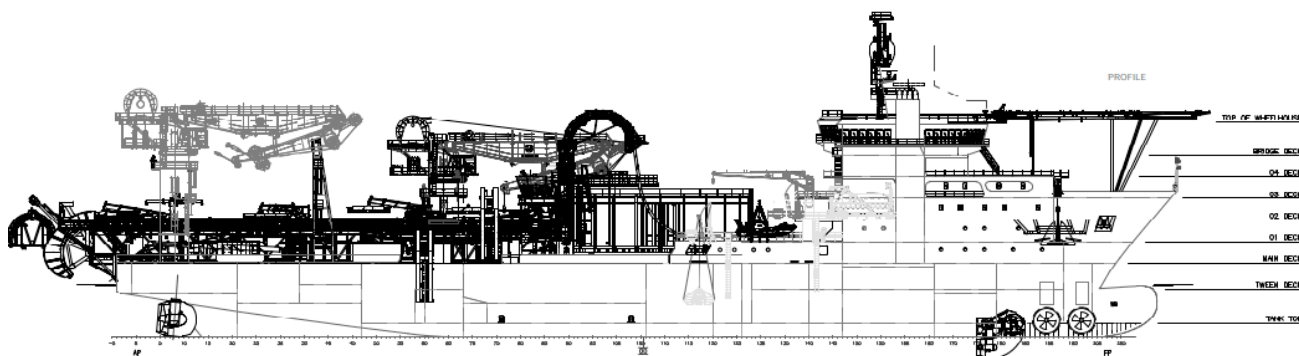
Midship crane	Hydramarine 3568 Offshore Knuckle Jib Crane 100 t @ 15 m, 10 t @ 34 m 500 m wire
Aft. crane	Hydramarine 3568 Offshore Knuckle Jib Crane 100 t @ 15 m, 10 t @ 34 m 500 m wire
Provision crane	SWL 5 t @ 12 m
Moonpool	Not present
Mooring winch	2 x 10 t

HELIDECK

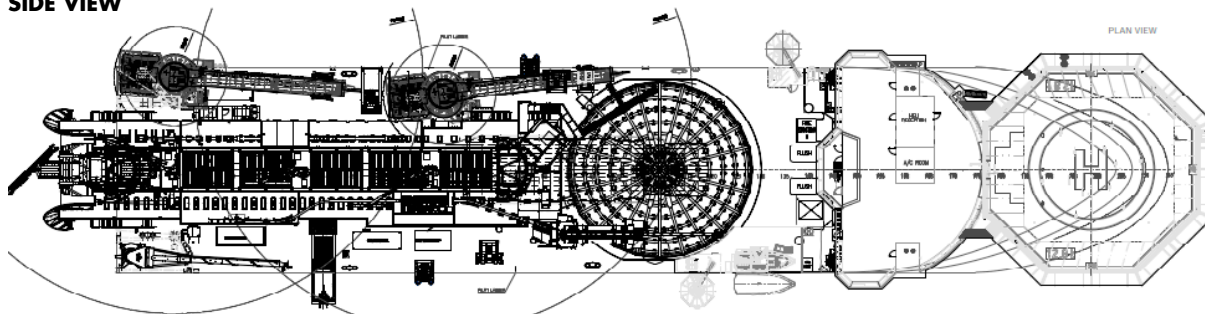
Size	D-Value 20.8 m (size 26.1 m) Suitable for Sikorsky S-92 (12.8 t)
------	---

ROV SYSTEM

ROV	1 x WROV Fugro FCV600 125 hp 1 x WROV Panther XT Plus
-----	--

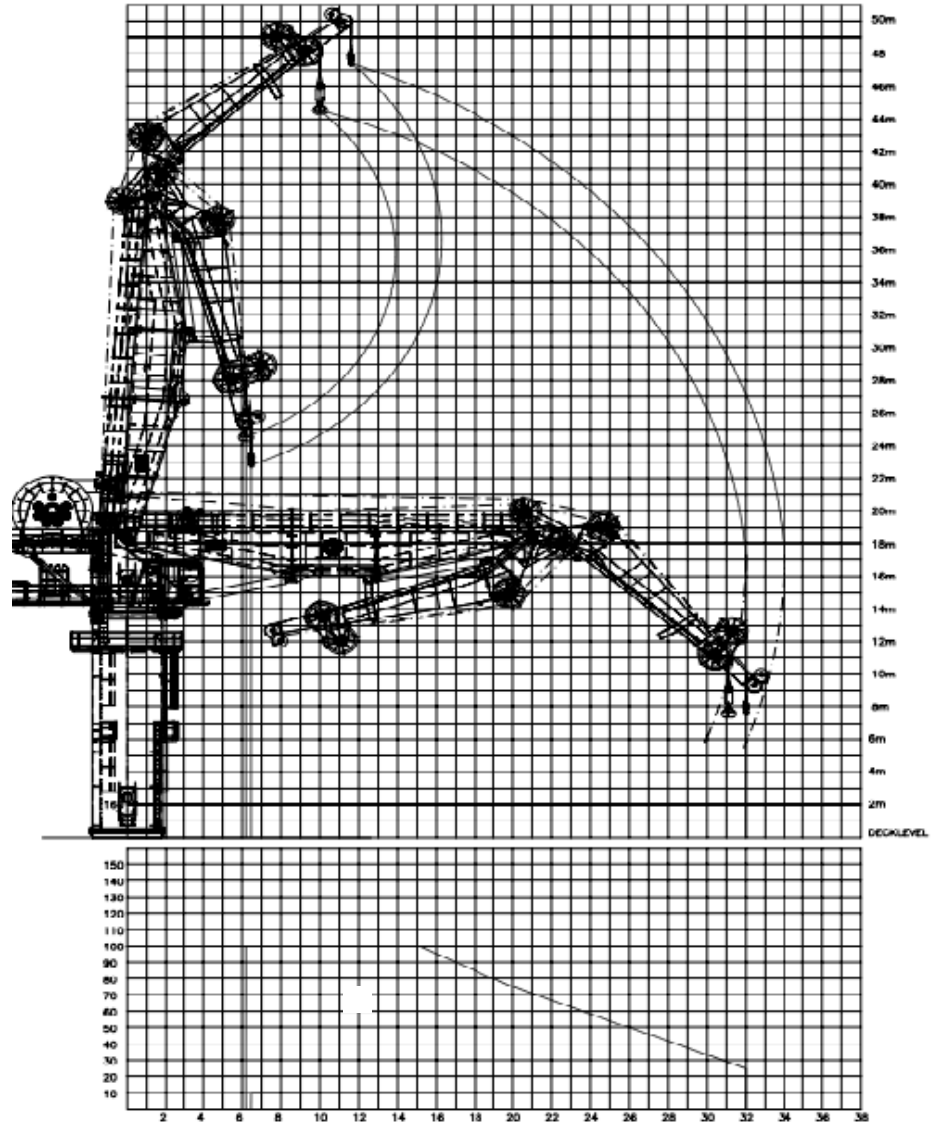


SIDE VIEW



TOP VIEW DECK LEVEL

100 T CRANE LOAD CHART



DP PLOTS

