

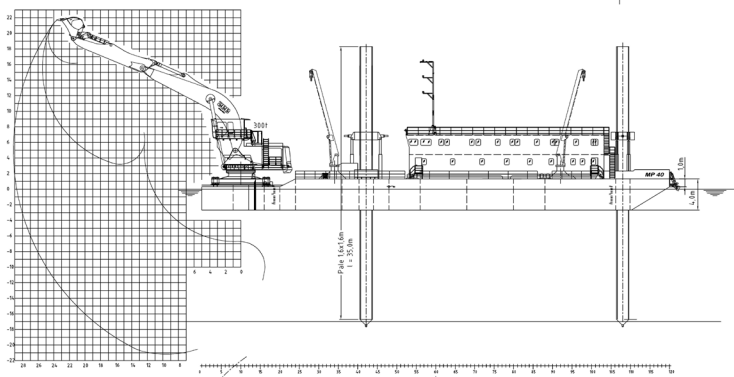


## CONSTRUCTION/CLASSIFICATION

Built by	MWB Motoren Werke Bremerhaven AG
Year of construction pontoon/crane	2008
Classification	DNV-GL 100 A 5 Dredger no propulsion. Unrestricted navigation. Dredging within 15 miles from the shore, or 20 miles from port.

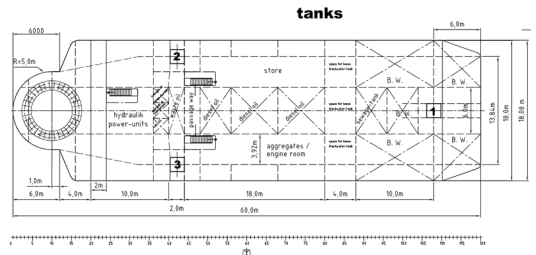
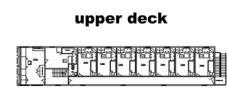
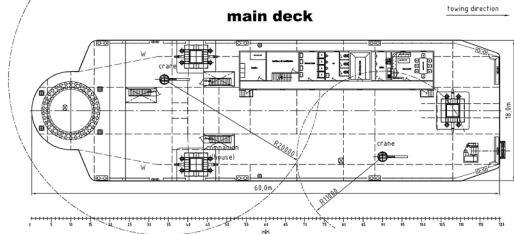
## MAIN DATA

Dead weight	2,276 t
Gross tonnage	1,257 GT
Length overall	60.03 m
Width	18.00 m
Moulded depth	3.00/ 4.00 m
Draught	2.66 m
Type of crane	Liebherr P995
Buckets	6 - 22 m <sup>3</sup>
Spud system	3 fixed spuds
Total installed power	2,000 kW
Excavator engine power	1,600 kW



**S1-TYPE DIPPERDREDGER**

- DIMENSIONS : 60.00 x 18.00/18.00 x 4.30/3.00 m
- CLASSIFICATION : GERMANISCHER LOYD  
+ 10045 " DREDGER "
- EXCAVATOR : LIEBHERR P995
- EXCAVATOR : 9.0 m<sup>2</sup> AT 120 m WORKING DEPTH
- max. WORKING DEPTH : approx. 24.00 m +/-
- SPUDELENGTH : (BASE) 25.00 m
- SPUD DIAMETER : SQUARE 1600 mm
- NOTE : +/- DEPENDS ON EXCAVATOR'S EQUIPMENT  
- Second auxiliary crane is optional



Boka DrwNo: 16-0014-30-01

**TOP AND SIDE VIEW**

The information contained in this data sheet is for guidance purposes only and may be subject to changes. © Boskalis. All rights reserved.