



CONSTRUCTION / CLASSIFICATION

Year of construction	2013
Classification	Bureau Veritas I ✕ HULL ✕ MACH, Tug, Fire fighting ship 1 -water spraying, Anchor vessel, Unrestricted navigation, AUT-UMS, INWATERSURVEY
IMO number	9662356
Call sign	9HA4833
Flag	Malta
Port of registration	Valletta

FEATURES

Accommodation	24 persons
Cabins	4 x 1 single berth, 10 x 2 berth cabin
Life rafts	4 x 16 persons
FRC	13 man, 212 hp diesel inboard engine, SOLAS approved
Dispersant system	2 x 6 m spray booms with dispersant pump
Freezer	8 m ³
Chiller	8 m ³

MAIN DATA

Gross/Netto tonnage	1,463 / 439 GT
Deadweight	925 t
Length overall	51.80 m
Breadth moulded	15.00 m
Depth moulded	6.50 m
Max draft moulded	6.20 m
Main engines	Wärtsilä 8L26 2 x 3,650 bhp (2,720 kW)
Propellers	2 x CPP in Kort nozzles
Bow thruster	2 x 6 t thrust, CPP
Stern thruster	1 x 6 t thrust, CPP
Generators	2 x 425 kW & 1 x 340 kW
Emergency generator	1 x 72 kW
Shaft generator	2 x 1,000 kW
Bollard Pull	116 t

FIRE FIGHTING

Class 1 with water spray	
Monitor	2 x water/foam - remote control
Water / foam	2 x 1,200 m ³ /hr
Pump capacity	2 x 1,600 m ³ /hr

NAVIGATION / COMMUNICATION EQUIPMENT

2 Radars	1 Gyro compass
1 Magnetic compass	1 Azimuth circle
1 Speed log	1 GPS
1 Echo sounder	2 VHF
1 Navtex	3 VHF portable
GMDSS Area A1, A2, A3	1 Inmarsat C
Joystick fwd and aft maneuvering stations	1 AIS

TOWING AND ANCHOR HANDLING

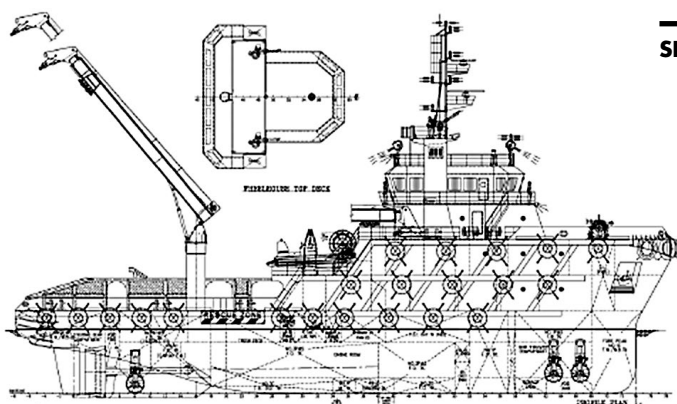
AH towing winch	Rolls-Royce double drum reverse Waterfall with spooling device
Drum capacities	1,200 m x 64 mm
Brake holding	275 t
Line pull @ 1 st layer	200 t @ 7 m/min 100 t @ 13 m/min
Storage reels	3 x hydraulic 1,000 m x 64 mm
Karm Fork	2 x 300 t SWL
Towing pin	2 x closed type
Stern roller	4.5 m x 2.0 m, SWL 300 t

DECK EQUIPMENT

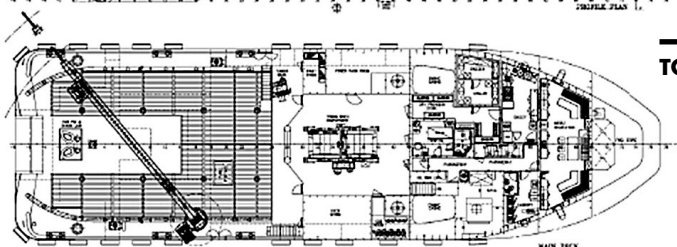
Capstan	2 x 5 t @ 0 -15 m/min
Tugger winch	2 x 10 t @ 15 m/min
Deck crane	Hydraulic telescopic crane Tech Crane TC60-56-100 (USA) 15 t @ 3 m outreach 11 t @ 10 m outreach 2.5 t @ 29 m outreach
Anchors	2 x HHP, AC-14, 1,440 kg each
Anchor chain	2 x 14 lengths, 34 mm diameter

CARGO / TANKS CAPACITY

Deck area	200 m ²
Deck loading	5 t/m ²
Fuel oil	860 m ³ , 1 x 100 m ³ /hr @ 60 m head
Potable water	120 m ³ , 1 x 70 m ³ /hr @ 60 m head
Water ballast	153 m ³
Foam	17 m ³
Detergent	13 m ³
Watermaker	5 t per day



SIDE VIEW



TOP VIEW

