

EQUIPMENT SHEET

BLUE MARLIN

SEMI-SUBMERSIBLE HEAVY TRANSPORT VESSEL



CONSTRUCTION/CLASSIFICATION

Built by	China Shipbuilding Co Taiwan
Year of construction	2000
Classification	Bureau Veritas ✕ HULL, ✕ MACH, Special Service Semi submersible heavy lift vessel, unrestricted navigation. ✕ AUT-UMS, MON-SHAFT, LI-HG-S1, INWATERSURVEY
IMO number	9186338
Flag	Malta
Port of registry	Valletta

MAIN DATA

Length overall	224.80 m
Breadth moulded/max	63.00 m
Depth	13.30 m
Draft submerged at FPP/APP	24.72/28.40 m
Summer draft	10.24 m
Deck space [l x w]	178.20 x 63.00 m
Deadweight	76,292 t
Trial speed	13.00 kn
Total installed power	23,620 kW
Main engines	1x12,640 kW
Main propulsion	1 x 12,640 kW C.P propeller

Azimuth thrusters	2 x 4,500 kW retractable
Bow thruster	2,000 kW

NAVIGATION EQUIPMENT

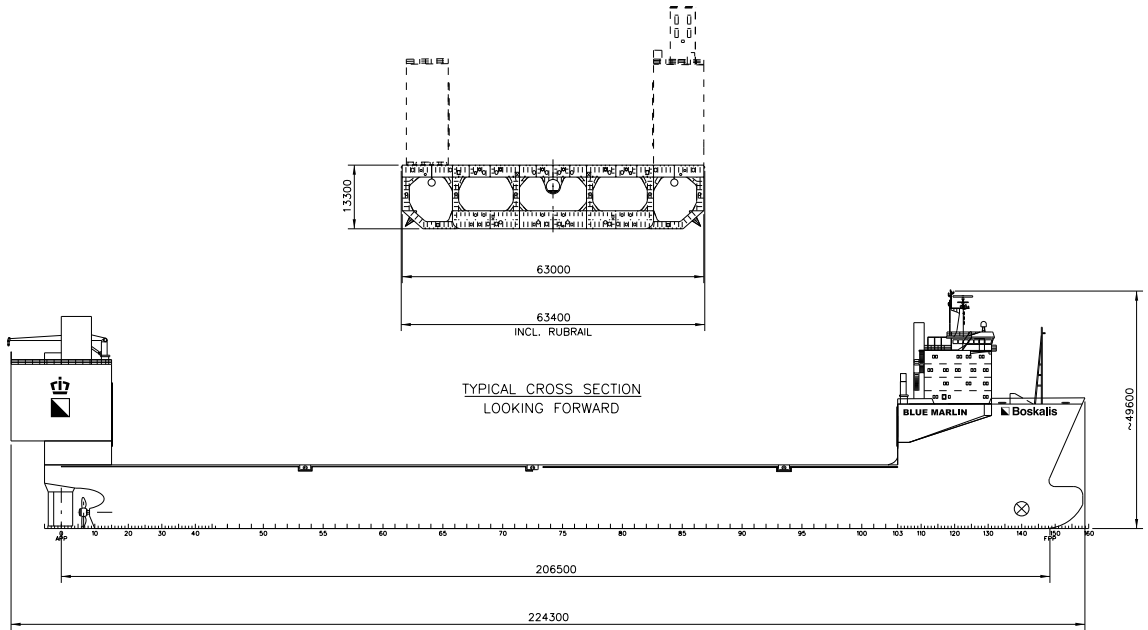
- Two radar, ARPA coupled
- Two GPS navigators
- Echo sounders with fore and aft transducers
- Two gyro compasses
- ECDIS
- Magnetic compass
- Doppler log
- SPOS - Ship Performance Optimisation System
- OCTOPUS - Octopus onboard system (ship motion monitoring and decision support system by Amarcn)

COMMUNICATIONS EQUIPMENT

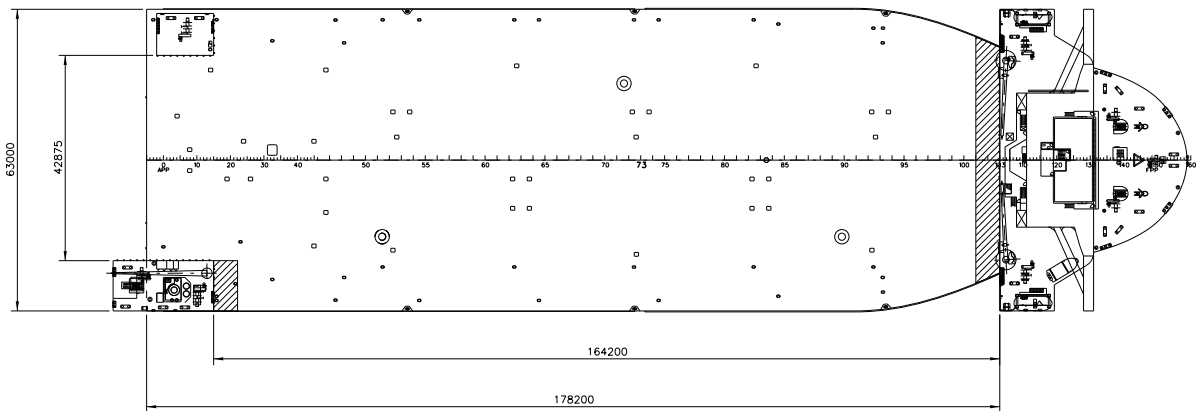
- Inmarsat B and C (telex/telephone/fax/data)
- VHF radio telephony
- Global wireless communication system
- Iridium mobile phone
- Weather facsimile
- NAVTEX receiver
- GMDSS

BALLASTING

- Four main ballast pumps 3,300 m³/hr@ 35 m head
- One fire gen. service pump 90 m³/hr@ 80 m head or 240 m³/hr@ 20 m head
- One fire bilge pump 90 m³/hr@ 80 m head or 240 m³/hr@ 20 m head
- One emergency fire pump 72 m³/hr@ 80 m head
- One gen. service s.w. pump 50 m³/hr@ 40 m head
- Two ballast stripping pumps 125 m³/hr@ 28 m head



SIDE VIEW



TOP VIEW DECK LEVEL